

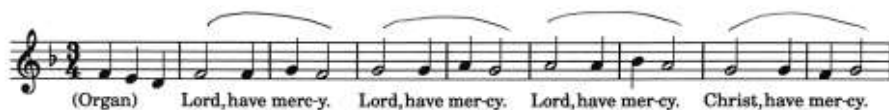
St Thomas' Church

# Holy Communion

## Gostling Service



### Kyrie Eleison



# Gloria

(Organ - ) Glor-y to God in the high-est and peace to his peo-ple on

6

earth. Lord, God, Heav-en-ly King Al - might - y God and Fath-er. We wor-ship you, we

12

give you thanks, we praise you for your glor - y. Lord Jesus Christ on-ly son of the fath-er

17

Lord God Lamb of God You take aw-ay the sin of the world have mer-cy up-on us.

23

You are sea-ted at the right hand of the fa - ther. Re-ceive our prayer.

29

( Organ ) For you a-lone are the Ho-ly one, you a-lone are the - Lord.

35

You a-lone are the most high, Jes-us Christ with the Ho-ly-Spi-rit. In the glo-ry of

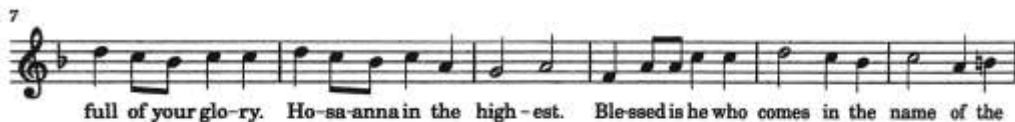
40

God the - Fa - ther. A - men

## Gospel Acclamation



## Sanctus & Benedictus



## Christ had died:

(-Organ-) Christ has died, Christ is risen Christ will come a - gain.

The musical notation is in 4/4 time, starting with a treble clef and a key signature of one flat (B-flat). The melody consists of quarter notes and half notes, with a final whole note. The lyrics are: (-Organ-) Christ has died, Christ is risen Christ will come a - gain.

## Amen

(Organ) A - - - - - men

The musical notation is in 4/4 time, starting with a treble clef and a key signature of one flat (B-flat). The melody consists of quarter notes and half notes, with a final whole note. The lyrics are: (Organ) A - - - - - men.

## Agnus Dei

(organ - ) Je - sus, Lamb of God, have mer - cy on us.

The musical notation is in 4/4 time, starting with a treble clef and a key signature of one flat (B-flat). The melody consists of quarter notes and half notes, with a final whole note. The lyrics are: (organ - ) Je - sus, Lamb of God, have mer - cy on us.

7 Je - sus, bearer of our sins, have mer - cy on us. Je - sus, re - deem - er of - the

The musical notation is in 4/4 time, starting with a treble clef and a key signature of one flat (B-flat). The melody consists of quarter notes and half notes, with a final whole note. The lyrics are: 7 Je - sus, bearer of our sins, have mer - cy on us. Je - sus, re - deem - er of - the

14 world, Grant us thy peace.

The musical notation is in 4/4 time, starting with a treble clef and a key signature of one flat (B-flat). The melody consists of quarter notes and half notes, with a final whole note. The lyrics are: 14 world, Grant us thy peace.

Please do not take away